



COP (CELL ON PLATFORM)

CONSTRUCTION SPECIFICATIONS

- Heavy Gauge Aluminum or Steel as Required
- Powder Coat or Epoxy Finishes
- Stainless Steel and Grade-8 Fasteners Throughout
- Hot-Dipped Galvanized Steel Base Frame
- R4 Rated Double-Sided Foil Insulation
- Stainless Steel Handles and Hardware
- Custom Designed Equipment & Battery Racks as Required
- Modular Construction
- Outriggers and Jacks as Required
- Linex® Floor Coating
- Standing Rib Roof Design

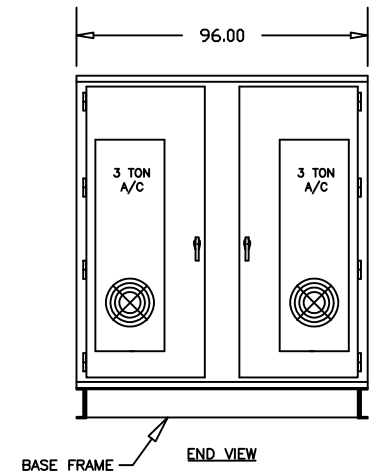
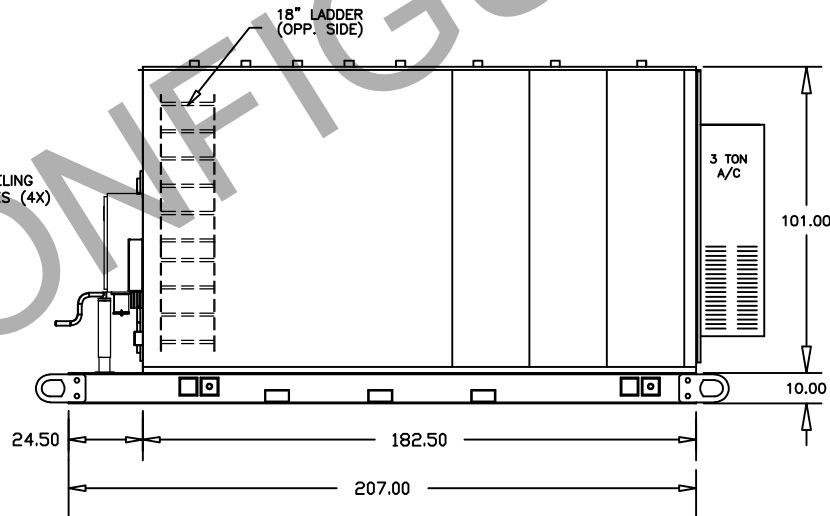
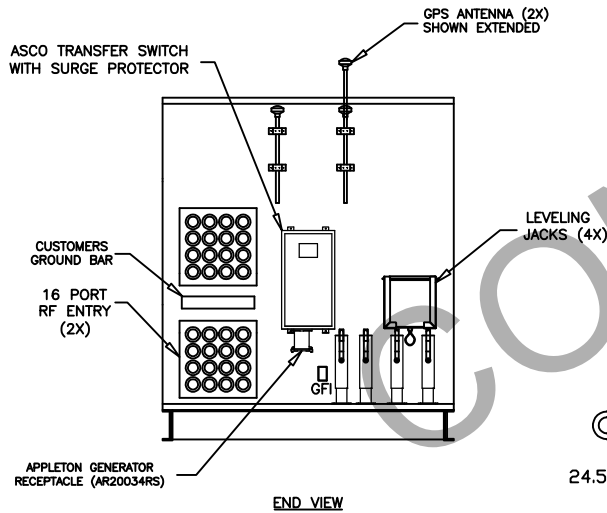
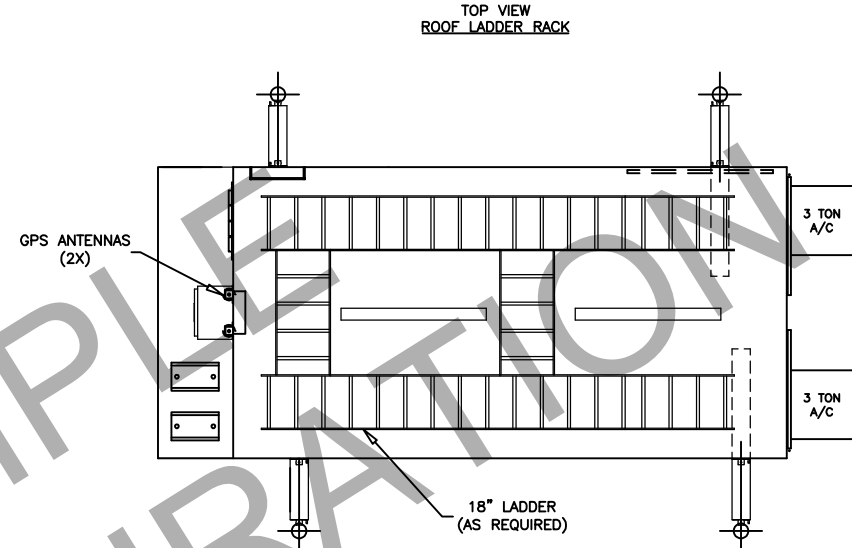
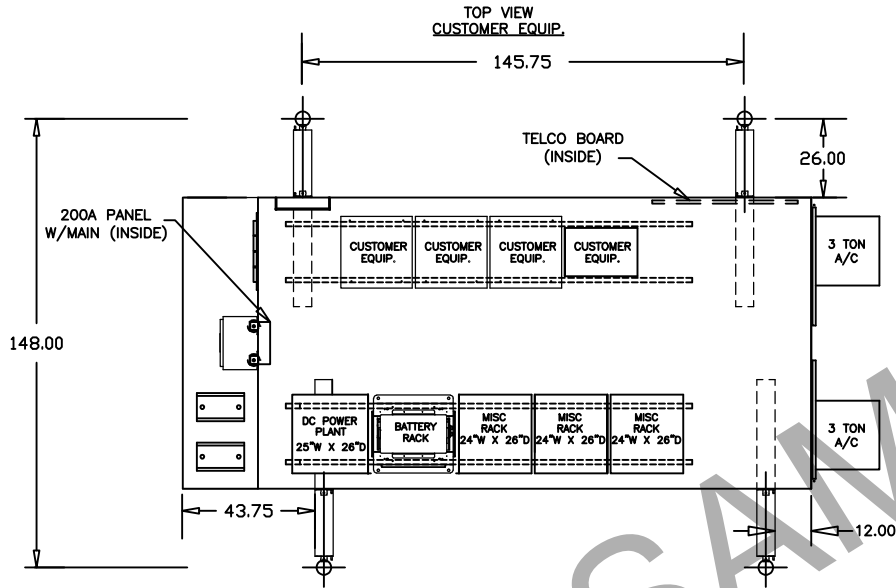
CONFIGURATION SPECIFICATIONS

- Custom Designed UL® Listed NEMA 3R Wireless Communications Cabinet
 - 150 MPH Wind Load, 150-lb/sq. ft. Snow Load, 500-lb/sq. ft. Floor Load, Zone-4 Rated
 - R56 Ground Ring, Main Ground Bar (Exterior) Equipment Ground Bar (Interior)
 - Internal & External GFI Service Receptacles
 - 200 AMP 42-Position 1-Phase 3-Wire Distribution Panel
 - Flexible Equipment Mounting Options with Ceiling Mounted Ladder Rack
 - Lightweight Modular Design Provides For On-Site Assembly in Access Restricted Areas Like; Roof Tops, Parking Garages, and Under Power line Towers
 - McLean® HVAC Units with Lead-Lag Controller
 - High & Low Temperature Alarms, Intrusion, Smoke, Surge, & Utility Power Fail Alarms as Required
 - Fire Extinguisher, First-Aid & Eye Wash Kit Mounted on Telco Board
 - Fluorescent or LED lighting as Required
 - Passive Hydrogen Venting
 - White Powder Coat Finish Standard - Custom Colors Available
 - Concealment Solutions Available
- Options/Add-ons:**
- Pneumatic or Hydraulic Masts as Required
 - 20 - 36 Kw 1-Phase, 3-Wire, 120/240 Volt Generator
 - Extended Run Fuel Cell - 24 Hour, 48 hour or As Required
 - Provisions for Mounting Remote Mounted Radio Heads






SITE: _____



PROPRIETARY PROPOSAL

**** PROPRIETARY AND CONFIDENTIAL ****
 Copyright © 2014 Sun West Engineering, Inc.
 THIS PROPOSAL CONTAINS TRADE SECRETS AND OTHER PROPRIETARY AND CONFIDENTIAL INFORMATION OF SUN WEST ENGINEERING, INC. THIS DOCUMENTS AND IT'S CONTENTS, INCLUDING WITHOUT LIMITATION THE DRAWINGS AND OTHER INFORMATION HEREIN, ARE THE SOLE AND EXCLUSIVE PROPERTY OF SUN WEST ENGINEERING, INC. ANY DUPLICATION, DISCLOSURE, OR USE OF ANY PORTION OF THIS DOCUMENT REQUIRES THE PRIOR WRITTEN CONSENT OF SUN WEST ENGINEERING, INC

		SUN WEST ENGINEERING, INC. 3802 E. BROADWAY, PHOENIX, AZ 85040 (602) 276-0662 TITLE: "COP"- CELL ON PLATFORM	
		CUSTOMER:	
PLOT SCALE: .XXXX=1	SHEET: 1 of 1		
DRAWN BY: <i>HJM</i>	DATE DRAWN: 2-15-12		
REVISED:	DWG. No. SW-4013		